

The background features abstract, flowing waves in shades of red, orange, and yellow, creating a dynamic and energetic feel. The waves are layered, with some appearing more prominent than others, and they curve across the frame.

# WORD STRESS

# WHAT IS WORD STRESS?

- All word that have more than one syllable have word stress
- One syllable is longer and louder than the other
- English words has it's own rhythm
- Word stress plays an important role of correct pronunciations of English words.

**CHI**-na

com-**MIT**-tee

**SLÉN**-der

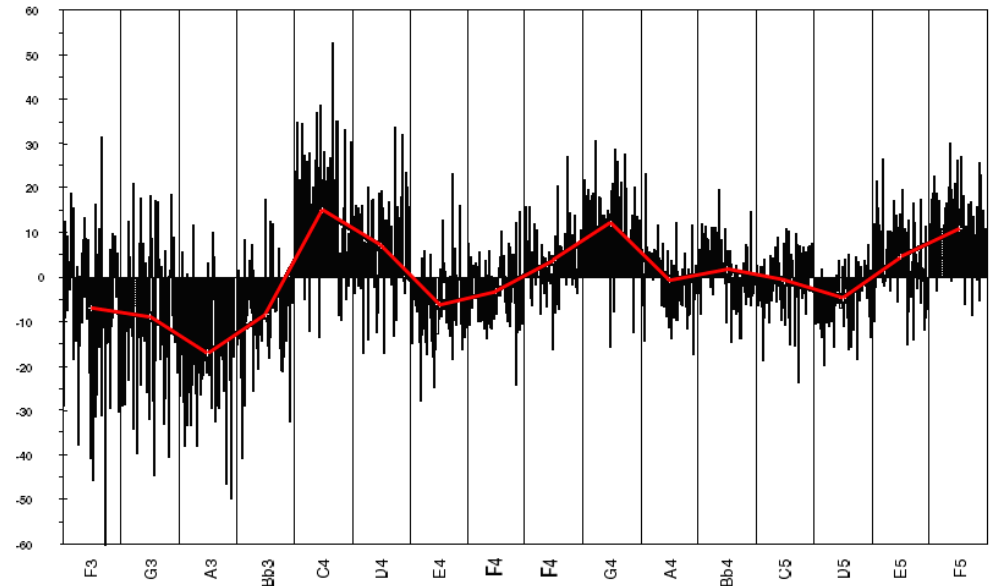
re-ve-**LA**-tion



# HOW TO PRONOUNCE WORD STRESS?

When a syllable is stressed, it is pronounced

- longer in duration
- higher in pitch
- louder in volume



# THE IMPORTANCE OF WORD STRESS

- Stressing the **wrong syllable** in a word can make the word **very difficult to hear and understand**.
- stressing a word differently can **change the meaning** or type of the word.
- Even if the speaker can be understood, mistakes with word stress can make the **listener feel irritated**, or perhaps even **amused**, and could **prevent good communication** from taking place.

DE-sert



de-SERT



# THE IMPORTANCE OF WORD STRESS

- Mistakes in word stress are a common cause of misunderstanding in English.
- Stressing a word differently can change the meaning or type of the word

For example: we will de**sert** the **de**sert by tomorrow

DE-**sert**

**de**-SERT

So as you can see the last part of the first de**sert** is STRESSED, while the last part of the second **de**sert is UNSTRESSED dessert.

- Even if the speaker can be understood, mistakes with word stress can make the **listener feel irritated**, or perhaps even **amused**, and could **prevent good communication** from taking place.
- Some other words:

pre**SENT**


**PRE**sent


**HOT** dog

hot **DOG**

**PU**pil

pu**PIL**

- 
- Word stress is not an optional extra that you can add to the English language if you want. It is **part of the language**.
  - Word stress is very important to knowing how to properly pronounce words in English.
  - Most English words will have **one** syllable said louder **than the other** syllables

- 
- Easy to understand for example in conference call when speaking with native speaker .
  - Usually the **stressed** words are the **content words**.

# RULES OF WORD STRESS



# THINGS TO REMEMBER!

1. **A word can only have one stress.** In a very long word you can have a secondary stress but it is always a much smaller stress.
2. **Only vowels are stressed, not consonants.** The vowels in English are a, e, i, o, and u. The consonants are all the other letters.

# TWO SYLLABLE NOUNS AND ADJECTIVES

- In most two syllable nouns and adjectives, the first syllable takes on the stress.

## Examples:


- **SAM**ples
- **CAR**ton
- **CO**lorful
- **RAI**ny

# TWO SYLLABLE VERBS AND PREPOSITIONS

- In most two syllable verbs and prepositions, the stress is on the second syllable.

## Examples:

- reLAX
- reCEIVE
- diRECT
- aMONG
- aSIDE
- beTWEEN

- 
- **More about word stress on two-syllable words**
  - About 80% or so of two-syllable words get their stress on the first syllable.
  - There are of course, exceptions to this rule, but very few nouns and adjectives get stress on their second syllable.
  - Verbs and prepositions usually get stress placed on the second syllable, but there are exceptions to this too.

# WORDS ENDING IN CONSONANTS AND IN -Y

- If there is a word that ends in a **consonant** or in a **-y**, then the first syllable gets the stress.

## Examples:

- **RAR**ity
- **OP**timal
- **GRA**dient
- **CON**tainer

# WORDS ENDING IN - ER, -OR,-LY

- For words ending with the suffixes **-er**, **-or**, or **-ly**, the stress is placed on the first syllable.

## Examples:

- **DIR**ect/**DIR**ect**or**
- **OR**der/**OR**der**ly**
- **MAN**age/**MAN**ag**er**

# PREFIXES

- Usually, prefixes do not take the stress of a word.

There are a few exceptions to this rule, however, like: **un**, **in**, **pre**, **ex** and **mis**, which are all stressed in their prefix.

## Examples:

- **ex**: **EX**ample, **EX**planation, **EX**amine
- **in**: **IN**side, **IN**efficient, **IN**terest
- **mis**: **MIS**poke, **MIS**take, **MIS**spelled
- **pre**: **PRE**cede, **PRE**arrange, **PRE**liminary

# WORDS HAVING DUAL ROLE

- In the case of words which can be used as either a noun or verb, the noun will tend to be stressed on the first syllable and the verb on the last syllable.

## Examples:

- **IM**port(n)                      im**PORT**(v)
- **IN**crease(n)                      in**CREASE**(v)

# WORD STRESS FOR COMPOUND WORDS

## A. Compound noun

- A compound noun is a noun made out of two nouns in order to form one word. In a compound noun, the first word usually takes on the stress.

### Examples:

- **ICE**land
- **TOOTH**paste
- **SEA**food

## B. Compound adjectives

- A compound adjective is an adjective composed of at least two words.

Often, hyphens are used in compound adjectives. In compound adjectives, the stress is placed within the second word.

### Examples:

- ten-**M**eter
- rock-**S**olid
- fifteen-**M**inute

## C. Compound verbs

- A compound verb is when a subject has two or more verbs. The stress is on the second or on the last part.

### Examples:

- Matilda loves bread but de**TESTS** butter.
- Sarah baked cookies and **ATE** them up.
- Dogs love to eat bones and love **DRIN**king water.

## D. Noun + compound nouns

- Noun + compound Nouns are two word compound nouns. In noun + compound noun, the stress is on the first word.

### Examples:

- **AIR**plane mechanic
- **PRO**ject manager
- **BOARD**room member

# EXERCISES

Determine which of the following is the correct stressed syllable

1. a) con-VICT ❌

b) CON-vict ✅

why b? because **convict** is a noun, thus the stress in the first syllable

2. a) sym-BOL ❌

b) SYM-bol ✅

why b? because **symbol** is a noun, thus the stress in the first syllable

3. a) be-GIN ✅

b) BE-gin ❌

why a? because **begin** is a verb, thus the stress in the last syllable

4. a) fun-NY ❌

b) FUN-ny ✅

why b? because funny is an adjective, thus the stress in the first syllable

5. a) black-BOARD ❌

b) BLACK-board ✅

why b? because this is a compound noun where the stress occurs on the first syllable

6. a) mis-SPELL-ed ❌

b) MIS-spell-ed ✅

b) mis-SPELLED ❌

d) MIS-spelled ❌

why b? because **mis** in misspelled is a unique prefix that take stress in it.

7. a) PRO-per-ly



c) pro-per-LY



b) PROPER-ly



d) PRO-PER-LY



why a? because properly is ending with the suffix ly

ANY QUESTIONS??

ICE cream



i SCREAM

